

All rights reserved by **CNHi**.

The information contained in this catalogue is intended to be of a general nature only. **CNHi** may at any time and from time to time, for technical or other necessary reasons, modify any of the details or specifications of the product described in this catalogue.

To be sure of getting accurate, detailed and up-to-date information, an intending buyer should consult his nearest **CNHi** dealer or distributor.

Single item numeration method used in this catalogue may not be used without written consent from **CNHi**.

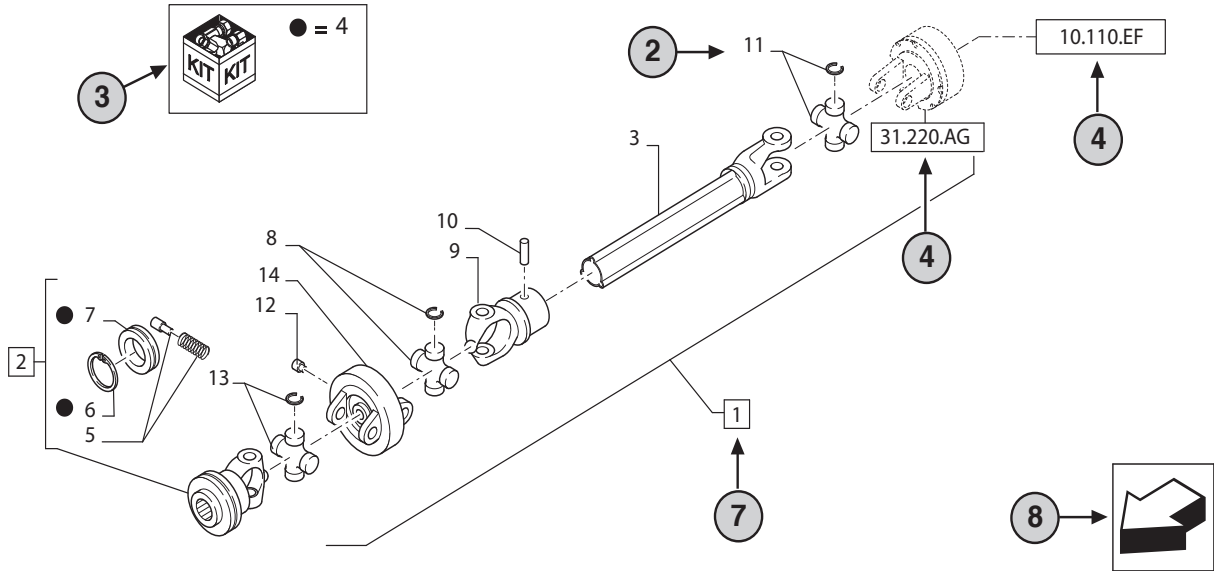
31.220.AD

01

p1

10/2014

VAR - 123782, 789101,987654 - PTO - D650



STANDARD ← 6

23

9

10

31.220.AD

01

p1

10/2014

VAR - 123782, 789101,987654 - PTO - D650

11


12

13

14

REF	FN	PART NUMBER	YR/SN	QTY	DESCRIPTION
1	1	86529340	20	1	SHAFT PTO, Incl 2 - 11
2	15	84014007		1	YOKE, Incl 4 -7 ← 7
3	16	NSS		1	NOT SERVICED SEPARATELY, SHAFT, 350mm, Incl in 1
4		84004292		1	KIT, Seal Kit, Incl 6, 7 ← 17
4		{84058743}		1	KIT, Seal Kit, Incl 6, 7
2	18		21		
	19		22		
		1 = FOR ITALY ONLY ← 5			

MODELS ← 1

- 1 Model Number and Model Description
- 2 Reference - Figure call-out of the part number.
- 3 Parts supplied in repair kits per symbol reference.
- 4 31.220.AD Part illustrated on the **Page** or in the **Figure** indicated, or calls for **Variations** or **Details**. Indicates components shown in detail elsewhere in the catalogue under the figure number shown.
- 5 Footnote references
- 6 Figure notes
- 7 1 2 Includes item(s) ..... (See Description within partlist).
- 8 Orientation. (Arrow indicates front of the machine). 
- 9 Figure description.
- 10 General information of the figure.
- 11 Figure title number that aligns with the SRT. Standard Repair Time.
- 12 **Sequence** code within the assembly.
- 13 Page number within the sequence code.
- 14 **Date** of printing or updating of page (month-year).
- 15 **Note** - Relating to the Part Number. There is a key to symbols and abbreviations at the bottom of the text page.
- 16 Non-serviced parts.
- 17 Further description of the part to help confirm identification.
- 18 Not available as service part.
- 19 Part Number.
- 20 To be defined.
- 21 Total **Quantity** of the Part referred to in the page.  
The quantity can be replaced by the following indications:  
**AR** = quantity as requested.
- 22 Part **Description**.
- 23 Variant Codes

---

## TABLE OF CONTENTS

---

05.100.01		INITIAL STOCKING LIST (LIST A)
05.100.03		FILTERS & CAPACITIES, TC24D
05.100.03	01	FILTERS
05.100.03	02	CAPACITIES
01.01		CYLINDER BLOCK
01.02		CAMSHAFT & OIL PUMP
01.03		CYLINDER HEAD, ROCKER ARM, HEAD COVER & INTAKE MANIFOLD
01.04		CRANKSHAFT & PISTON
01.05		TIMING GEAR CASE & GOVERNOR
01.06		WATER PUMP & FAN
01.07		ALTERNATOR
01.08		STARTING MOTOR ASSEMBLY
01.08.01		STARTING MOTOR
01.09		INJECTION PUMP & LINES
01.09.01		FUEL INJECTOR ASSY.
01.10		THROTTLE CONTROLS - HAND & FOOT
02.01		RADIATOR
02.02		FUEL TANK & RELATED PARTS
02.03		MUFFLER
02.04		AIR CLEANER
03.01		CLUTCH & CLUTCH CASE - W/9 X 3
03.02		CLUTCH & CLUTCH CASE - W/HST
03.03		REAR TRANSMISSION CASE & SHIFTER
03.04		REAR TRANSMISSION GEARS - W/9 X 3
03.05		REAR TRANSMISSION GEARS - W/HST
03.06		PTO GEARS
03.07		MID PTO GEARS, W/HST
03.08		MID PTO KIT W/9 X 3
03.09		HYDROSTATIC TRANSMISSION CONTROLS
03.09.01		HYDROSTATIC TRANSMISSION
03.10		HYDROSTATIC TRANSMISSION CONTROLS - SPEED LOCK
03.11		GEARSHIFT LEVERS
03.12		BRAKE CONTROLS & PEDALS
03.13		FRONT END WEIGHTS
04.01		FRONT AXLE W/POWER STEERING
04.02		DIFFERENTIAL GEARS

---

## TABLE OF CONTENTS

---

04.03	STEERING COLUMN, GEARBOX & PIPING, W/POWER STEERING
04.04	POWER STEERING BOX
04.07	POWER STEERING CYLINDER
05.01	BRAKE & WHEEL SHAFT CASE
05.02	DIFFERENTIAL & LOCK LINKAGE W/HST
05.03	DIFFERENTIAL & LOCK LINKAGE W/9 X 3
06.01	WIRING HARNESS
06.01.01	ELECTRICAL COMPONENTS, STEERING COLUMN
06.02	BATTERY
06.03	INSTRUMENT PANEL
06.04	DASHBOARD
07.01	HYDRAULIC LIFT COVER & ARMS
07.02	CONTROL VALVE, QUADRANT & LINKAGE
07.03	REMOTE CONTROL VALVE & PIPING KIT
07.03.01	REMOTE CONTROL VALVE ASSEMBLY
07.04	HYDRAULIC PUMP & PIPING
07.04.01	HYDRAULIC PUMP
07.05	HST PIPING & OIL COOLER
07.06	HPL CONTROL VALVE ASSEMBLY
07.07	2-SPOOL REMOTE CONTROL VALVE & PIPING, WITH LOADER
07.08	JOYSTICK CONTROLS
07.09	2-SPOOL VALVE MOUNT, NON- LOADER - 710330036
07.10	TWO-SPOOL REMOTE CONTROL VALVE ASSEMBLY
07.11	MANIFOLD DIVERTOR BLOCK
08.01	FENDERS & RELATED PARTS
08.02	HOOD & RELATED PARTS
08.03	GRILLE GUARD KIT
09.01	THREE POINT LINKAGE
10.01	SEAT ASSEMBLY & TOOL BOX
10.02	SEAT BRACKET
10.03	STEPS & FLOOR MATS
10.04	ROLL BAR & RELATED PARTS
11.01	FRONT & REAR WHEELS
11.02	FRONT END WEIGHTS
11.03	REAR WHEEL WEIGHTS
11.05	FRONT TOW HOOK

---

## TABLE OF CONTENTS

---

14.01	DECALS
14.02	DECALS
14.03	FRENCH LANGUAGE OPERATOR'S MANUAL & SAFETY DECALS - 719184026
18.01	ACCESSORIES



---

## SECTION INDEX

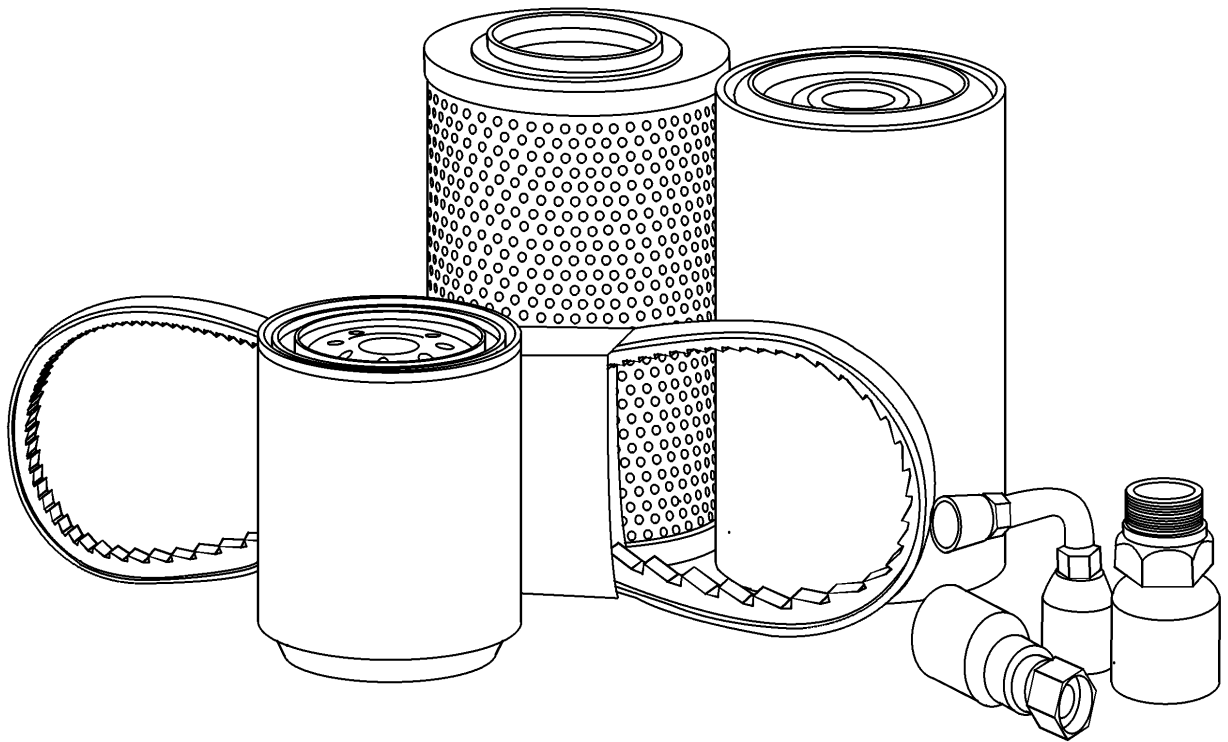
### GENERAL

---

05.100.01		INITIAL STOCKING LIST (LIST A)
05.100.03		FILTERS & CAPACITIES, TC24D
05.100.03	01	FILTERS
05.100.03	02	CAPACITIES



INITIAL STOCKING LIST (LIST A)



**05.100.01**

p1

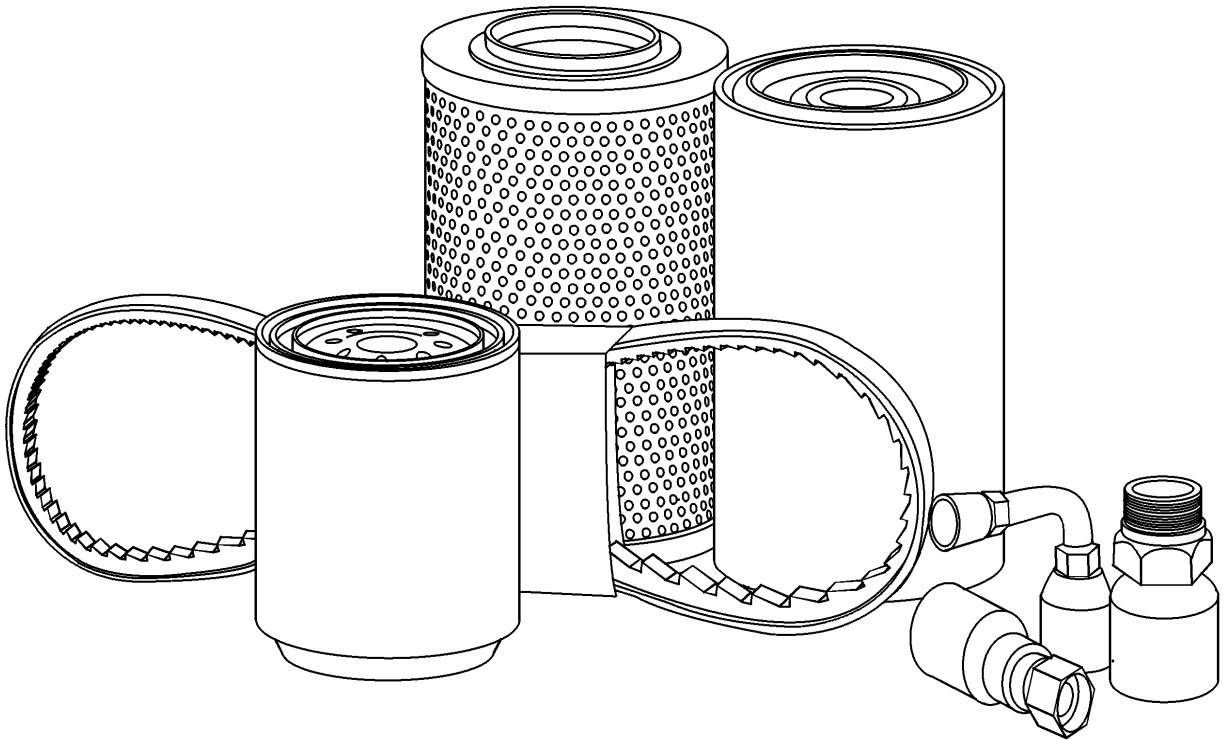
7/2018

**INITIAL STOCKING LIST (LIST A)**

<b>REF FN</b>	<b>PART NUMBER</b>	<b>YR/SN</b>	<b>QTY DESCRIPTION</b>
1	87415600		1 ENGINE OIL FILTER
2	87300039		1 FUEL FILTER Fuel Filter
3	SBA314531174		1 AIR FILTER Outer
4	SBA314531175		1 AIR FILTER Inner
5	SBA340501030		1 FILTER Hyd W/Bypass
6	87300043		1 HYDRAULIC OIL FILTER Spin-On (Pump)

**TC24D-3 CYL COMPACT TRACTOR DELUXE**

FILTERS & CAPACITIES, TC24D



## FILTERS &amp; CAPACITIES, TC24D

REF FN	PART NUMBER	YR/SN	QTY DESCRIPTION
*	CNH XHD COOLANT		ANTIFREEZE Coolant, 3.7-QT (3.5L)
1	84475542		1 ENGINE OIL FILTER
*	M-GOLD SAE10W30		OIL Engine Crankcase, W/Filter, 3.5-QT (3.3L)
*	M-GOLD SAE10W30		OIL Engine Crankcase, W/O Filter, 3.2-QT (3L)
2	{SBASBA314531174}		1 Air Filter
3	{SBASBA314531175}		1 Air Filter
4	87300043		1 HYDRAULIC OIL FILTER Spin On
5	SBA340501030		1 FILTER Hydrostat
*	MULTI G 134		OIL Hydraulic, Rear Axle & Transmission, 4.23-Gal (16L)
6	SBA360720130		1 ELEMENT Fuel, Cartridge
*	MULTI G 134		OIL Front Axle, Hubs and Differential Each-FWD Only, Differential, 1.06-QT (1L)
*	MULTI G 134		OIL Front Axle, Hubs and Differential Each-FWD Only, Final Reduction Each Side, 0.85-QT (0.8L)
*	MULTI G 134		OIL Front Axle, Hubs and Differential Each-FWD Only, Hubs, 29-OZ (0.86L)

**TC24D-3 CYL COMPACT TRACTOR DELUXE**

FILTERS

ENGINE EQUIPMENT  
OUTER AIR FILTER

02.04 3

ENGINE EQUIPMENT  
INNER AIR FILTER

4 02.04

ENGINE  
OIL FILTER

01.01 1

HYDRAULIC SYSTEM  
OIL FILTER W/BYPASS

07.05 5

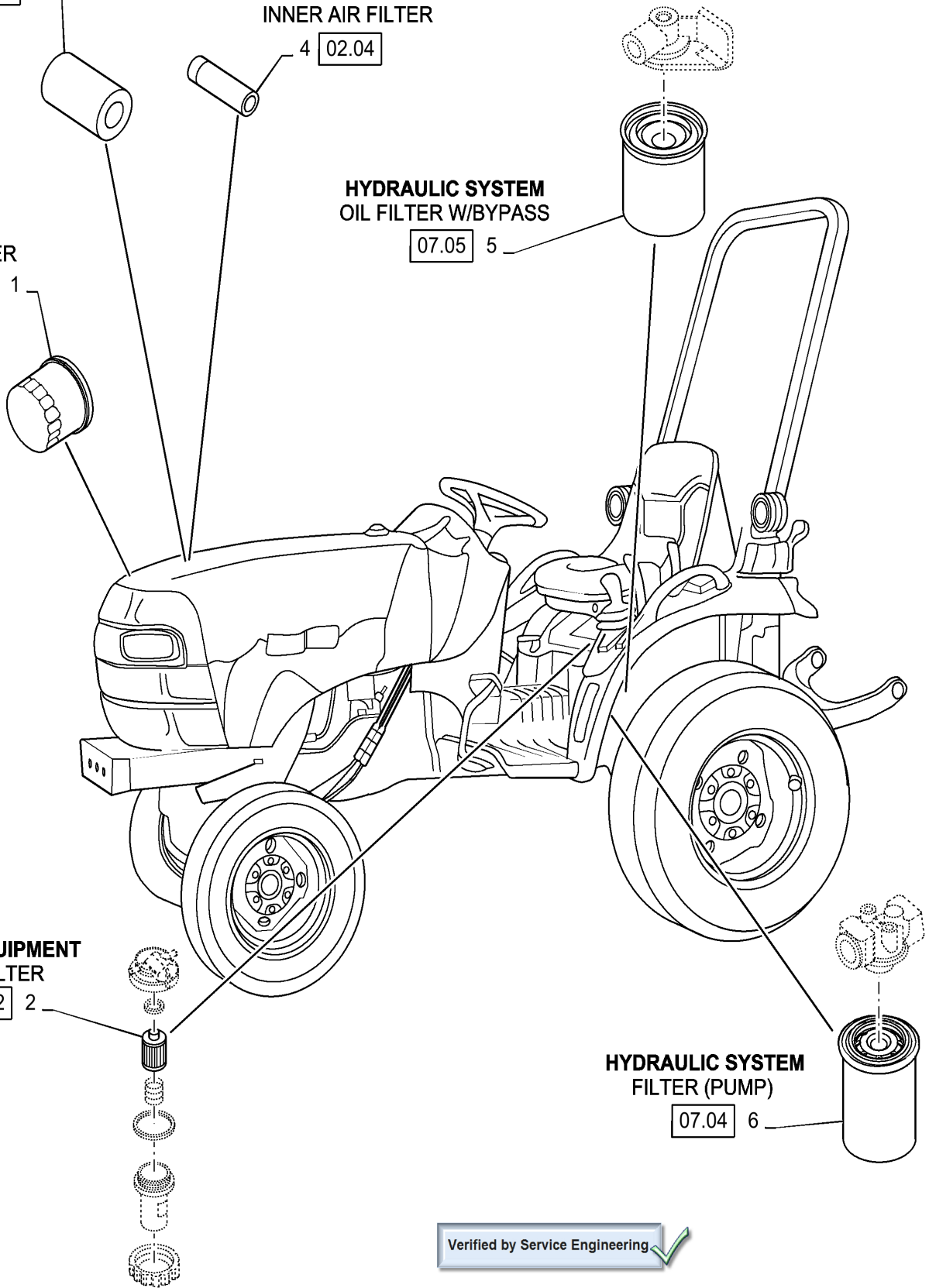
ENGINE EQUIPMENT  
FUEL FILTER

02.02 2

HYDRAULIC SYSTEM  
FILTER (PUMP)

07.04 6

Verified by Service Engineering



**05.100.03**

01

p1

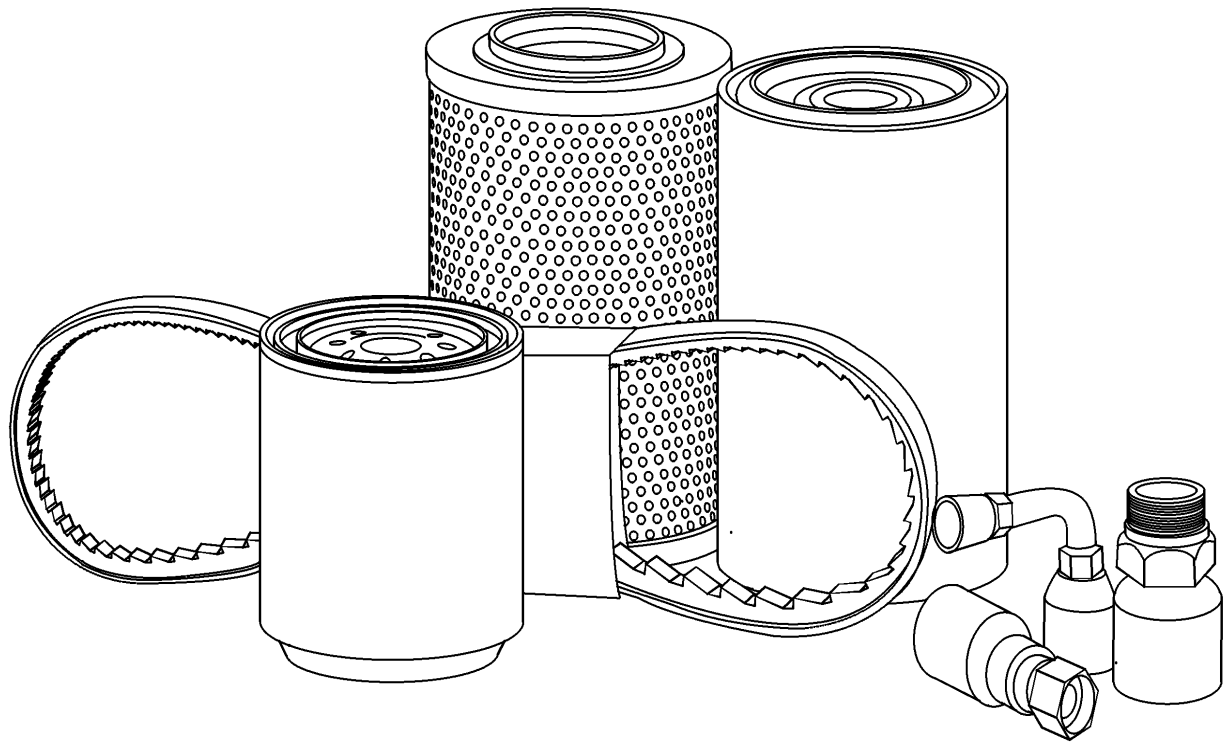
7/2018

**FILTERS**

<b>REF FN</b>	<b>PART NUMBER</b>	<b>YR/SN</b>	<b>QTY DESCRIPTION</b>
1	87415600		1 ENGINE OIL FILTER
2	87300039		1 FUEL FILTER Fuel Filter
3	SBA314531174		1 AIR FILTER Outer
4	SBA314531175		1 AIR FILTER Inner
5	SBA340501030		1 FILTER Hyd W/Bypass
6	87300043		1 HYDRAULIC OIL FILTER Spin-On (Pump)

**TC24D-3 CYL COMPACT TRACTOR DELUXE**

CAPACITIES



## CAPACITIES

REF FN	PART NUMBER	YR/SN	QTY DESCRIPTION
*	CNH XHD COOLANT		ANTIFREEZE Coolant, 3.7-QT (3.5L)
*	M-GOLD SAE10W30		OIL Engine Crankcase, W/Filter, 3.5-QT (3.3L)
*	M-GOLD SAE10W30		OIL Engine Crankcase, W/O Filter, 3.2-QT (3L)
*	MULTI G 134		OIL Hydraulic, Rear Axle & Transmission, 4.23-Gal (16L)
*	MULTI G 134		OIL Front Axle, Hubs and Differential Each-FWD Only, Differential, 1.06-QT (1L)
*	MULTI G 134		OIL Front Axle, Hubs and Differential Each-FWD Only, Final Reduction Each Side, 0.85-QT (0.8L)
*	MULTI G 134		OIL Front Axle, Hubs and Differential Each-FWD Only, Hubs, 29-OZ (0.86L)

**TC24D-3 CYL COMPACT TRACTOR DELUXE**



---

## SECTION INDEX

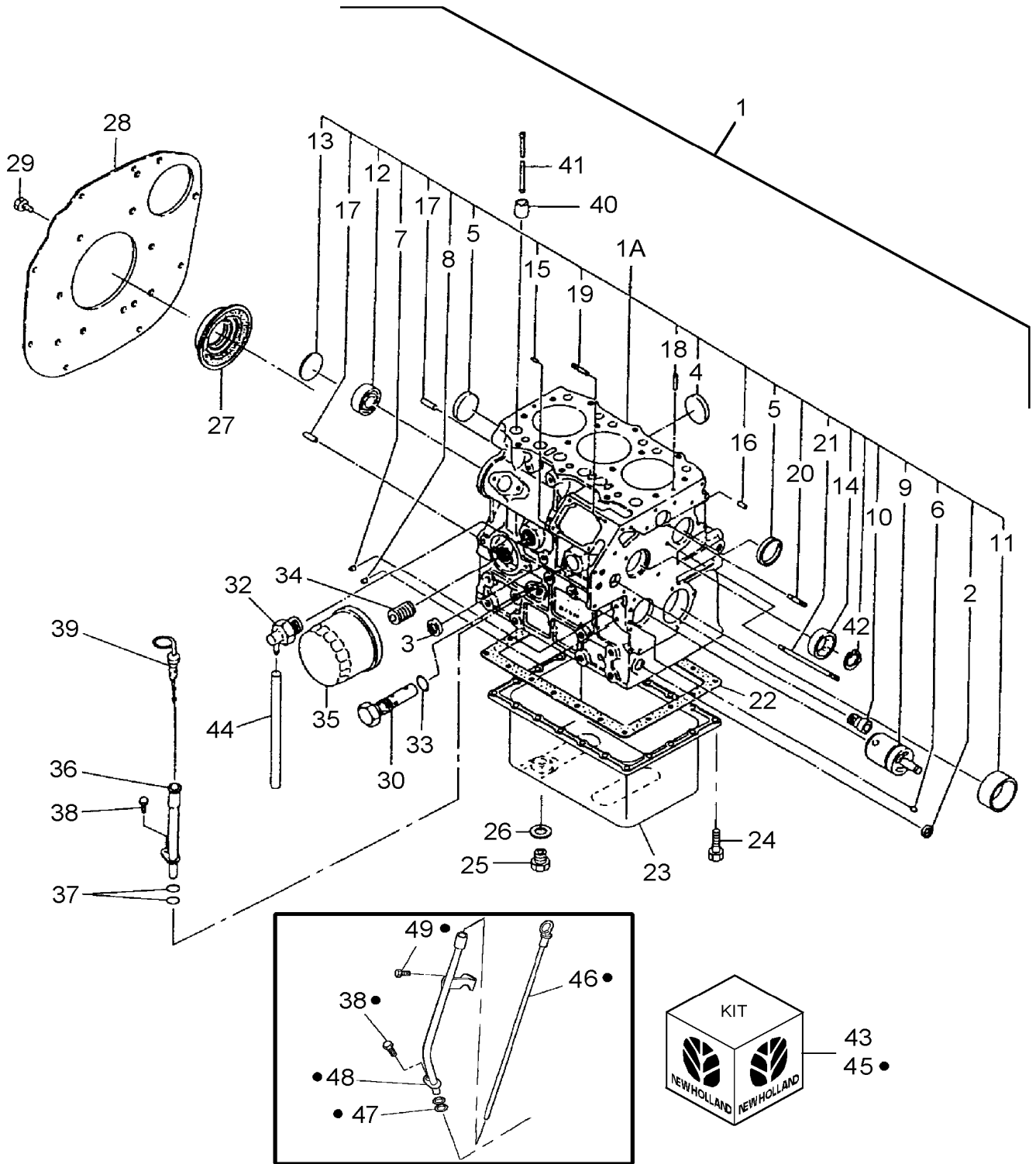
### ENGINE

---

01.01	CYLINDER BLOCK
01.02	CAMSHAFT & OIL PUMP
01.03	CYLINDER HEAD, ROCKER ARM, HEAD COVER & INTAKE MANIFOLD
01.04	CRANKSHAFT & PISTON
01.05	TIMING GEAR CASE & GOVERNOR
01.06	WATER PUMP & FAN
01.07	ALTERNATOR
01.08	STARTING MOTOR ASSEMBLY
01.08.01	STARTING MOTOR
01.09	INJECTION PUMP & LINES
01.09.01	FUEL INJECTOR ASSY.
01.10	THROTTLE CONTROLS - HAND & FOOT



CYLINDER BLOCK



Complete engines are typically not available. Recommendation is to order the Long Block.

Removed Parts from complete engine for Long Block

- Flywheel
- Damper Disk
- Starter

## CYLINDER BLOCK

REF FN	PART NUMBER	YR/SN	QTY DESCRIPTION
1	SBA138633		1 ENGINE Block, Long
	SBA138633ER		1 REMAN-REPLACEMENT EN TC24D (4/02-)
	SBA138633EPAC		CORE-EPA ENGINE Return Number
	SBA138633R		1 REMAN-REPLACEMENT EN TC24D (4/02-)
	SBA138633C		CORE-REPLACEMENT ENG Return Number
2	SBA064210015		1 CAP Sealing
3	SBA064210025		1 PLUG 25mm
4	SBA064200035		2 PLUG Sealing
5	SBA064210040		2 CAP Sealing, 40mm
6	SBA198466050		1 PLUG Blank
7	SBA198466010		4 PLUG Blank 8.4mm
8	SBA198466030		4 PLUG Blank 6.5 x 7mm
9	SBA165296142		1 GEAR Gear
10	SBA198517090		1 BUSHING
11	SBA198517591		1 BUSHING Standard
12	SBA040106203		1 BALL BEARING 17mm ID x 40mm OD x 12mm W
13	SBA064100045		1 PLUG Expansion
14	SBA042303015		1 NEEDLE BEARING
15	SBA030500512		2 PIN Dowel
16	SBA030500616		2 DOWEL M6 x 16
17	SBA030501025		2 BALL STUD M10 x 25 L BALL PIN
18	SBA030309005		2 PIN Spring
19	SBA012110620		2 STUD Stud
20	SBA012110635		1 STUD
21	SBA012110660		1 STUD
22	SBA110996800		1 GASKET
23	SBA110708340		1 ENGINE OIL PAN
24	SBA010109235		20 BOLT
25	SBA010411212		1 DRAIN PLUG M12 x 1.25
26	SBA025100012		2 WASHER 12.4mm ID x 19mm OD x 2mm Thk Sealing
27	SBA050209107		1 SEAL Oil
28	SBA110367710		1 PLATE Rear

## TC24D-3 CYL COMPACT TRACTOR DELUXE

**Thanks very much for your reading,  
Want to get more information,  
Please click here, Then get the complete  
manual**

**JustClickHere** 

**NOTE:**

**If there is no response to click on the link above,  
please download the PDF document first, and then  
click on it.**

**Have any questions please write to me:  
[admin@servicemanualperfect.com](mailto:admin@servicemanualperfect.com)**